

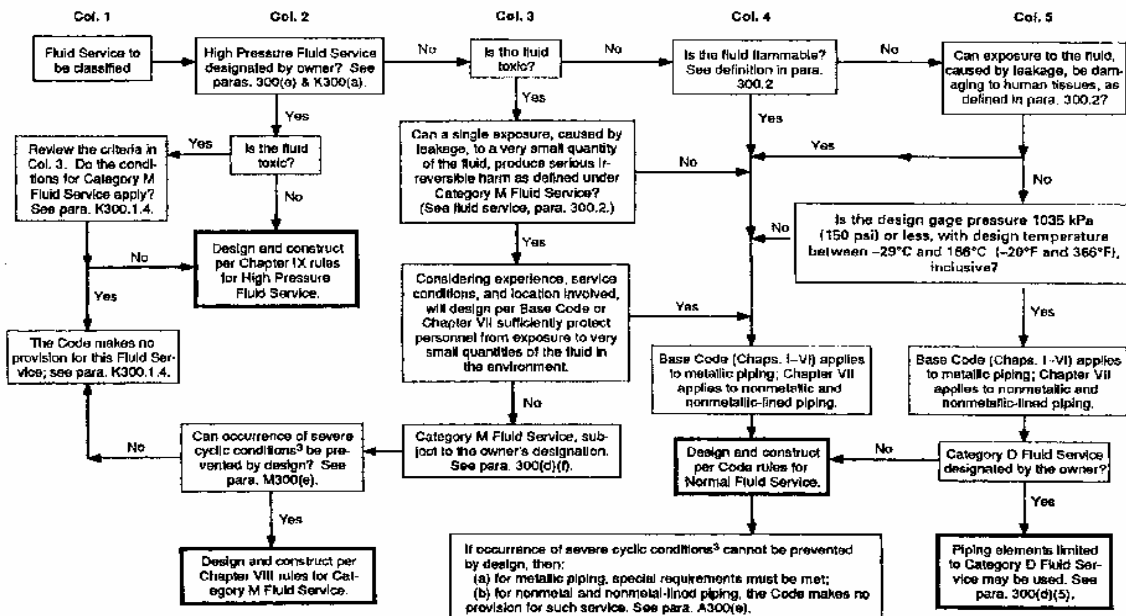


# ASME B31.3 "PROCESS PIPING"

PREPARED: **P.G.A.Engineering**  
 CHECKED:  
 APPROVED:  
 DATE: 19/10/2006

This calculation is according to ASME B31.3 "PROCESS PIPING"

FLUID SERVICE	Normal Fluid Service
Can occurrence of sever cyclic condition be prevent by design?	YES
Is the Fluid Toxic?	NO
Fluid Test	Hydrostatic Leak Test



NOTES:  
 (1) See paras. 300(b)(1), 300(d)(4) and (5), and 300(e) for decisions the owner must make. Other decisions are the designer's responsibility, see para. 300(b)(2).  
 (2) The term "fluid service" is defined in para. 300.2.  
 (3) Severe cyclic conditions are defined in para. 300.2. Requirements are found in Chapter II, Parts 3 and 4, and in paras. 323.4.2 and 341.4.3.

FIG. M300 GUIDE TO CLASSIFYING FLUID SERVICES

## Design and Costruct per Code Rules for Nominal Fluid Service Chapter I - VI

Design Pressure	P	155,1	kgF/cm2
Minimum Design Temperature	T <sub>MIN</sub>	0	°C
Maximum Design Temperature	T <sub>MAX</sub>	38	°C
Test Temperature	T <sub>T</sub>	20	°C

### VERIFICATION

Description	Check	Action
P ≥ 105 kPa	OK	NONE
CAT.D ?	NO	NONE